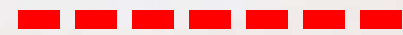



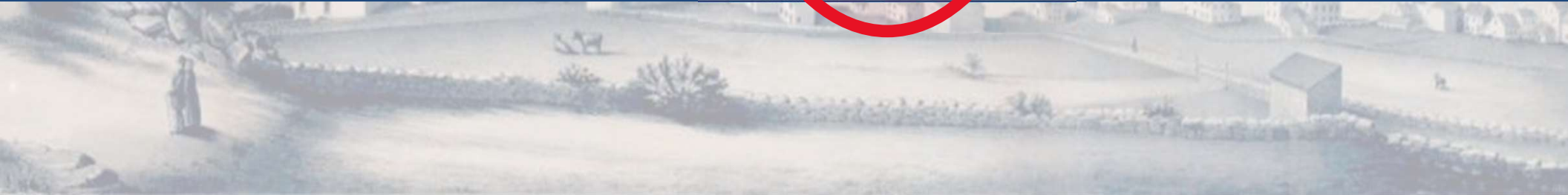
Docent Academy



A Quick Regional History



COLONY
1637-1775







A historical illustration of a harbor scene, likely from the American Revolutionary War era. The foreground shows a coastal town with several buildings and a large open area, possibly a fort or a public square. In the middle ground, a large number of sailing ships are visible in the harbor, some with their sails up. The background shows a hazy, distant cityscape. The overall tone is sepia and historical.

REVOLUTION

Privateering

The Battle of Groton Heights

The Burning of New London



The Delegates of the Thirteen
United Colonies,

To Nathaniel Shaw Jun^r Esq^r.

Greeting,

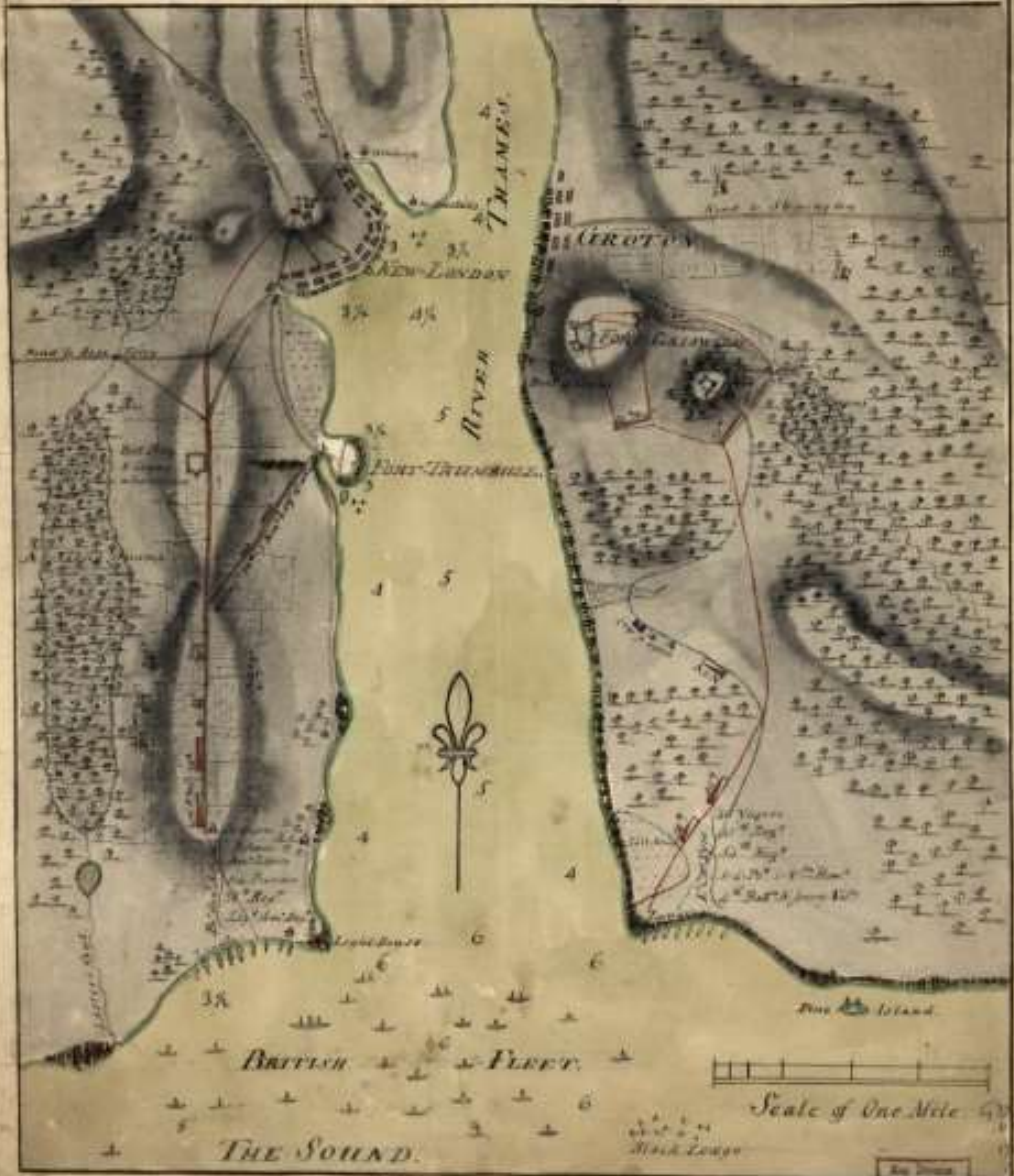
You being Appointed
by Congress Agent for Continental
Prizes in the Colony of Connecticut,
I do hereby Authorize & Impower
you to act in said Office, and to
Appoint one or more Deputies
under you as you may judge
necessary, & do require you to
be carefull in the Execution of
said Trust, & strictly to conform
to the orders & Directions hitherto
Transmitted you, & to such further
Directions as you shall from time
to time receive from Congress,
or the Marine Board touching
your said Office

Given under my hand
at Philadelphia this Twenty
third Day of April 1776

By order of Congress
John Hancock Presid^t

A SKETCH of NEW LONDON & GROTON

with the Attacks made on
FORTS TRUMBULL & GRISWOLD by the **BRITISH TROOPS**
under the Command of **BRIG^d GEN^l ARNOLD**, Sep^r 6th 1781.

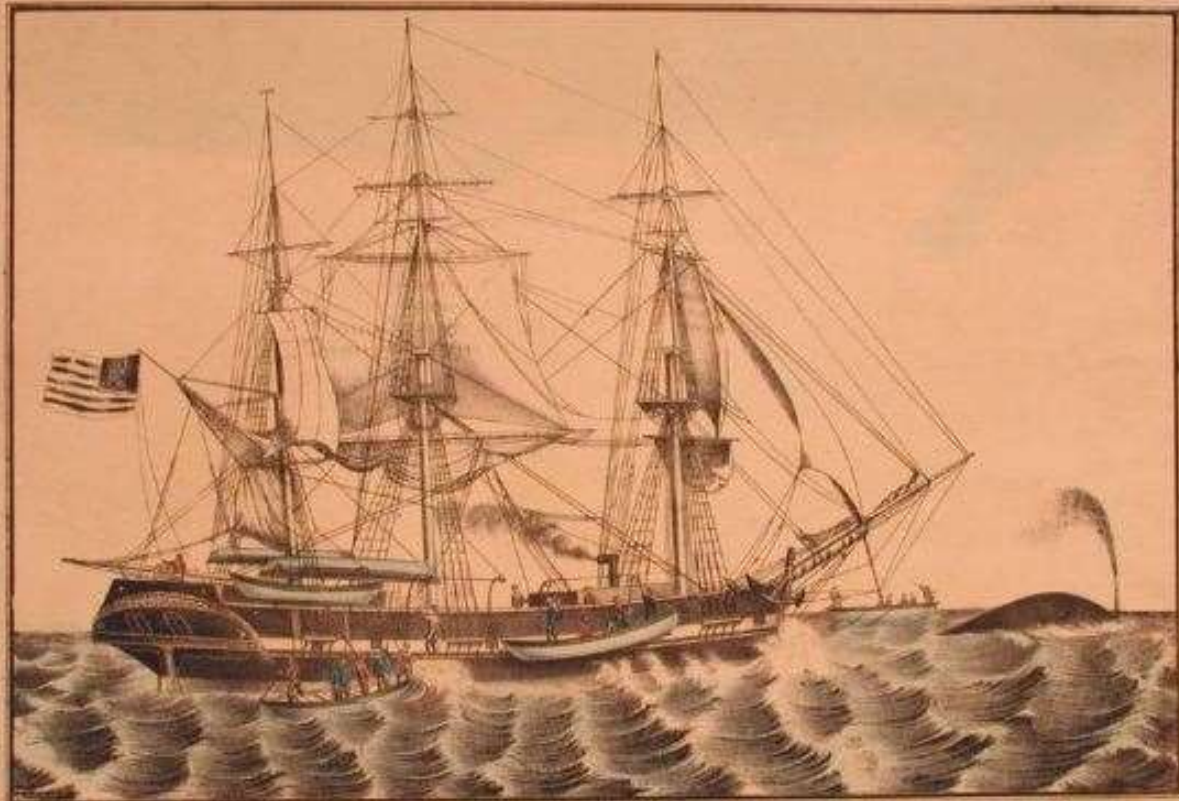




REBUILDING

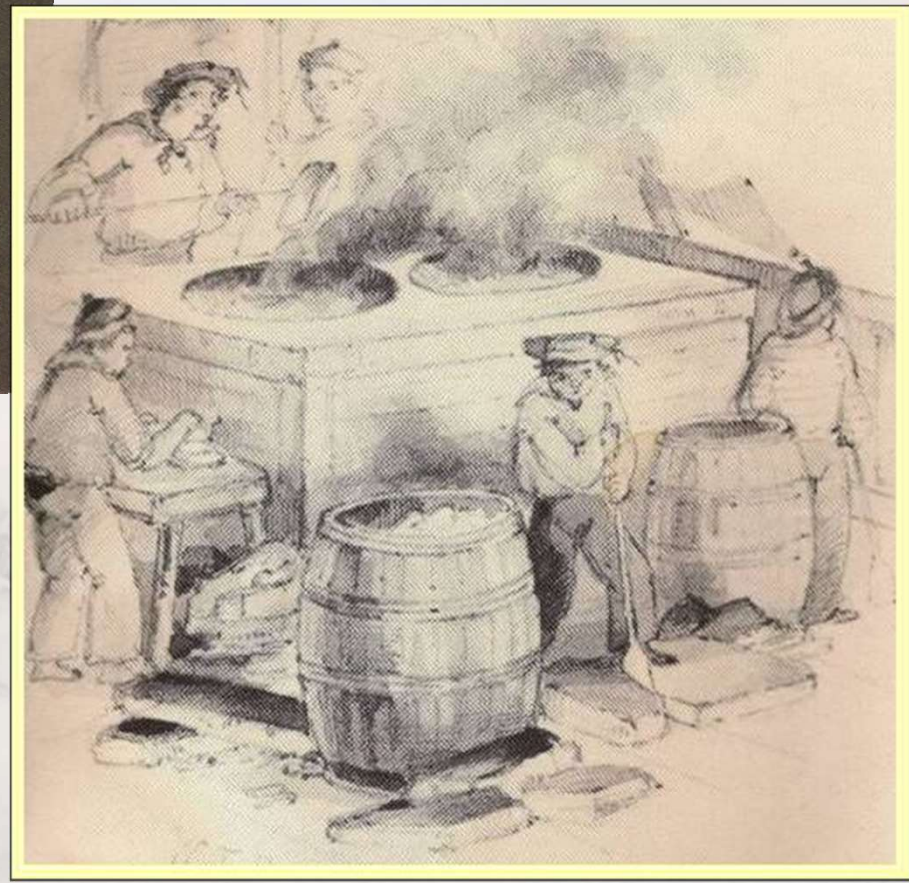
WHALING

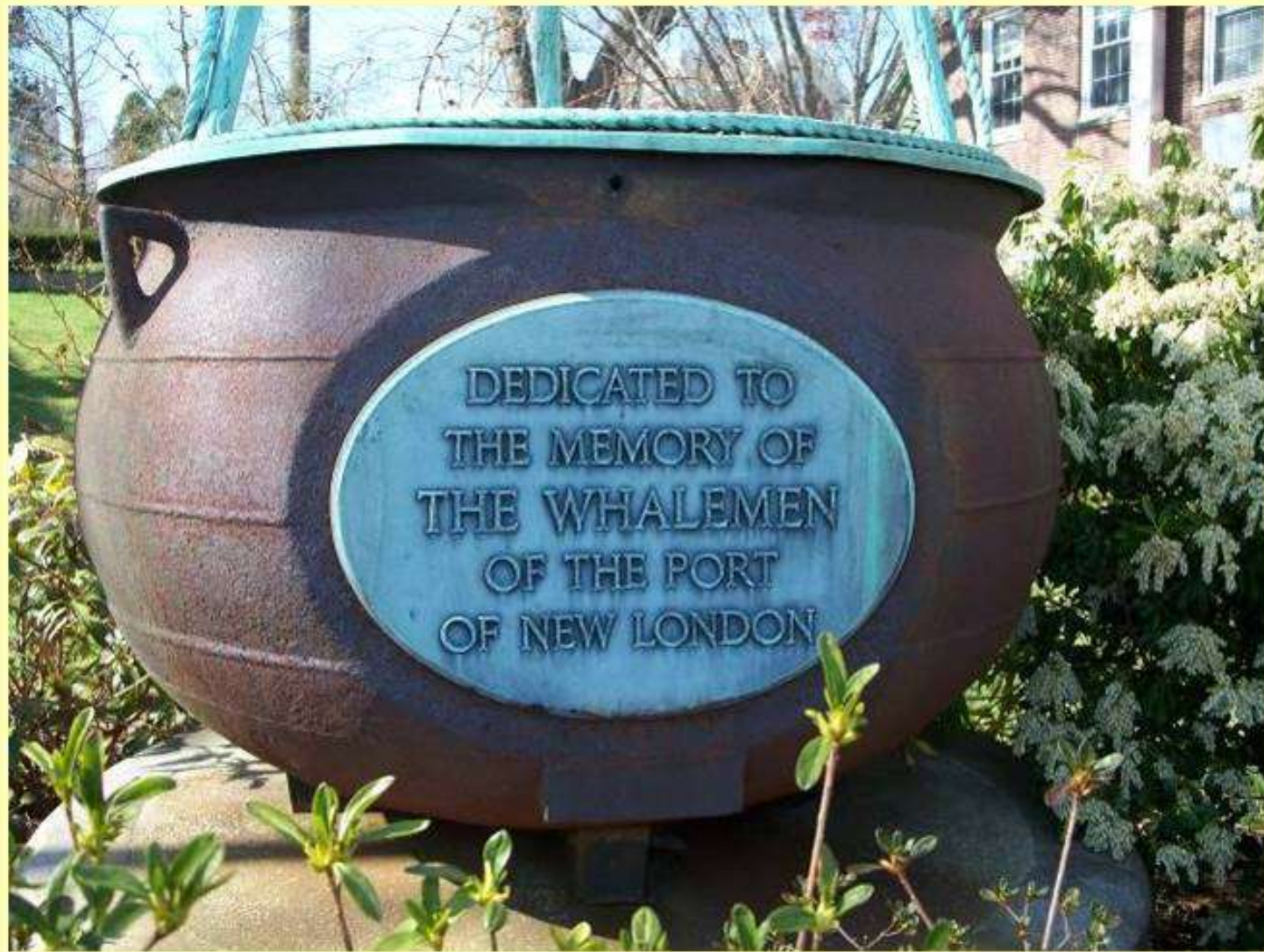




AMERICAN WHALER.







DEDICATED TO
THE MEMORY OF
THE WHALEMEN
OF THE PORT
OF NEW LONDON

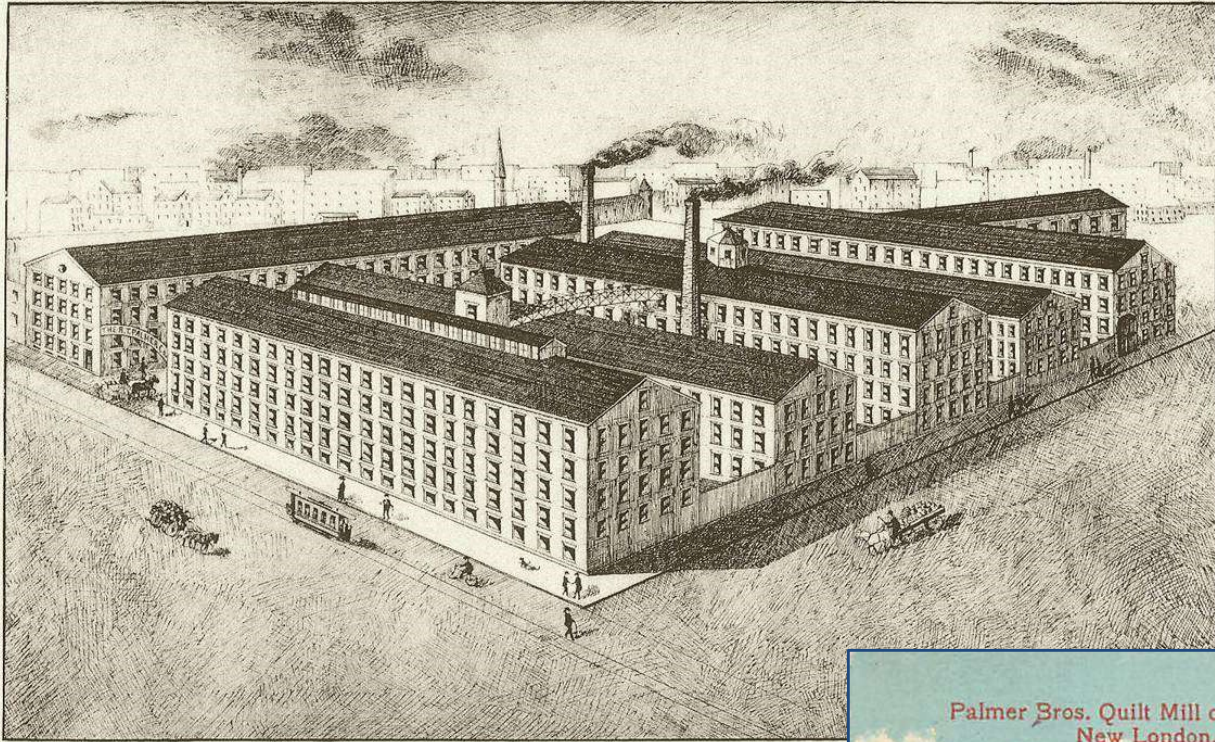


A historical illustration of a harbor scene, likely from the 19th century. The foreground shows a rocky shore with a few buildings and a person standing. The middle ground is filled with numerous sailing ships and steamships in the water. The background shows a dense cityscape with many buildings and a large bridge or structure in the distance. The sky is light and hazy.

GILDED AGE

TOURISM

INDUSTRY



MILLS OF THE R. T. PALMER COMPANY—MANUFACTURERS OF



Palmer Bros. Quilt Mill on Washington St.,
New London, Conn.

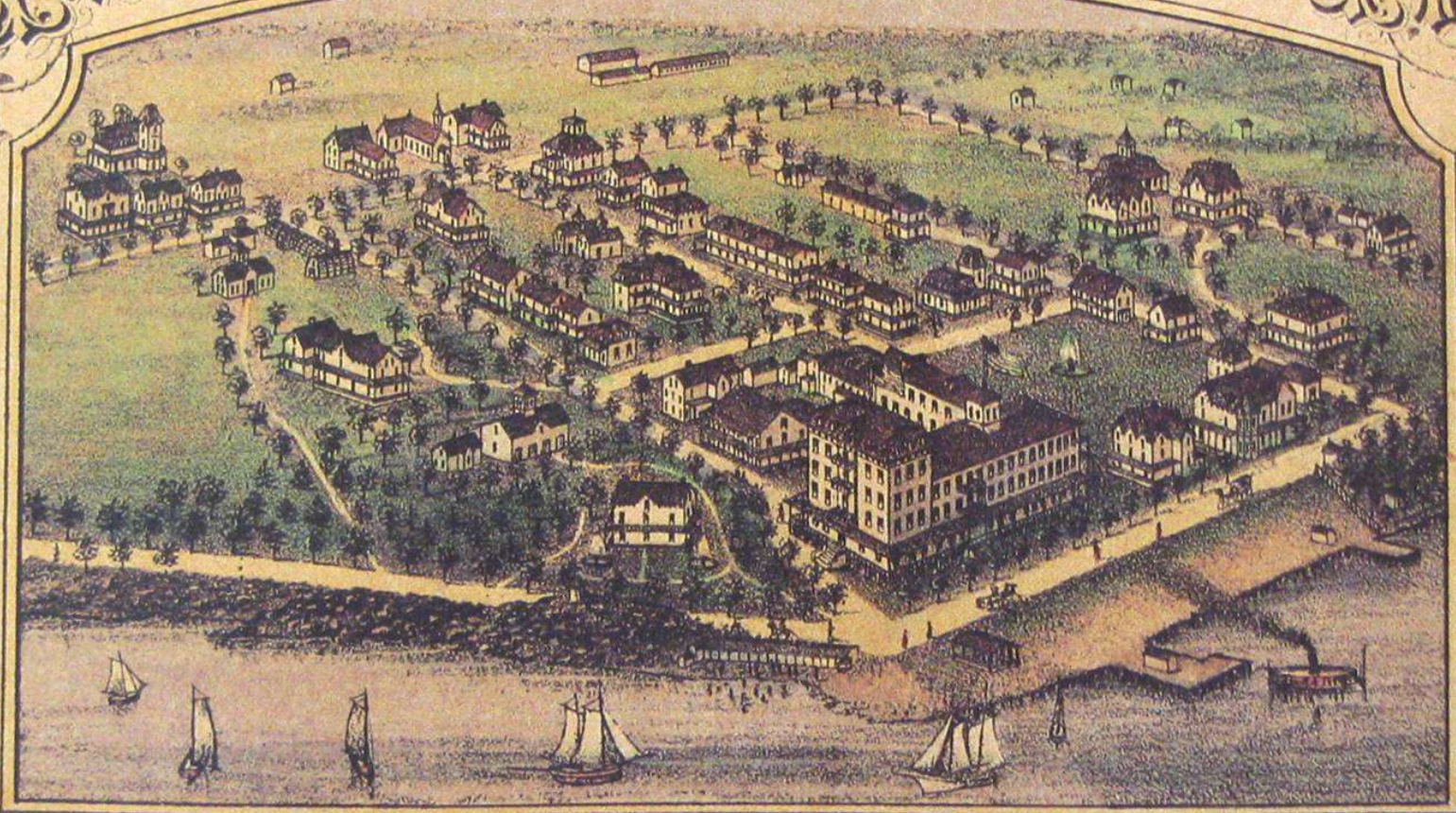




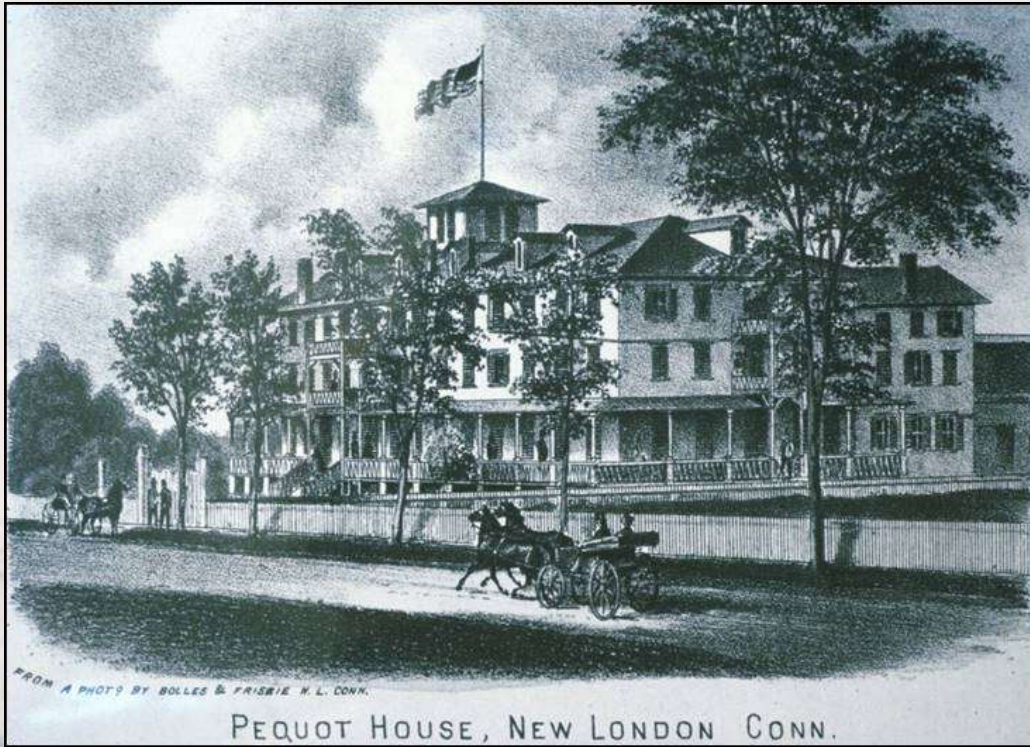
1051011

NEW LONDON, CONN.

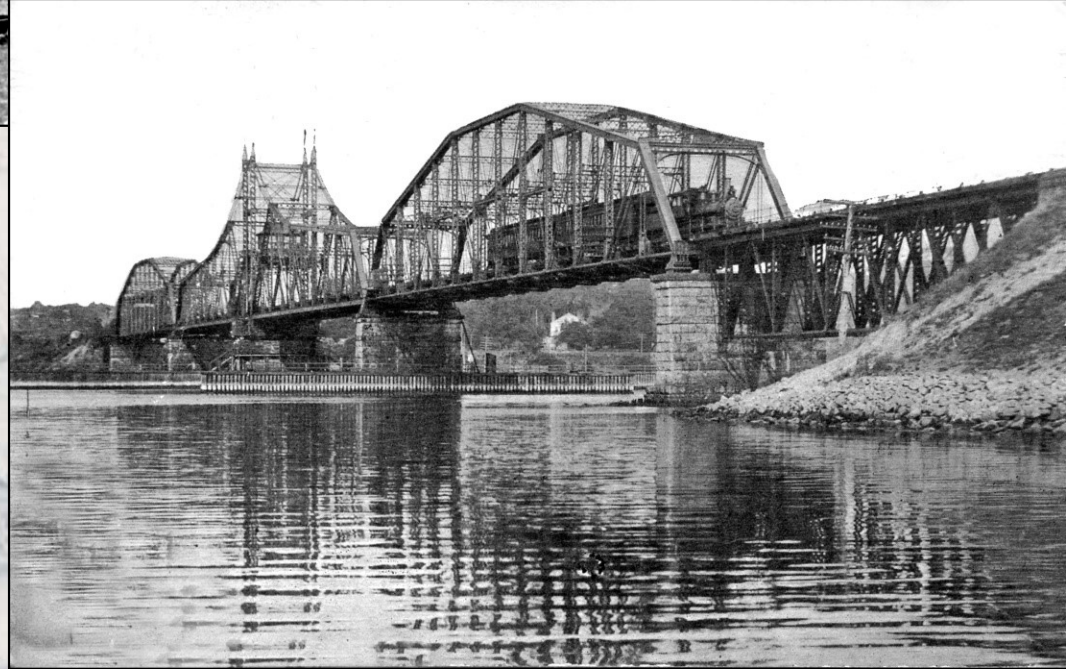
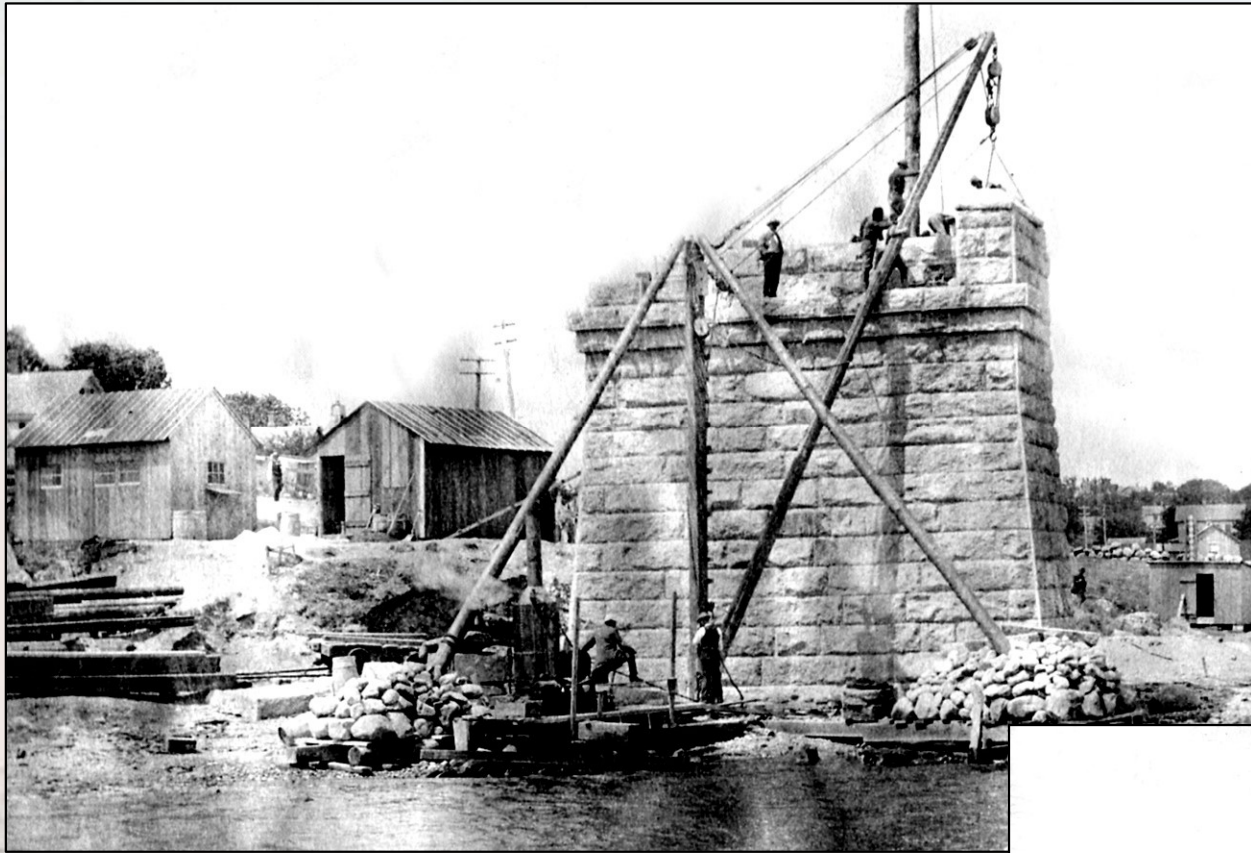
1876.

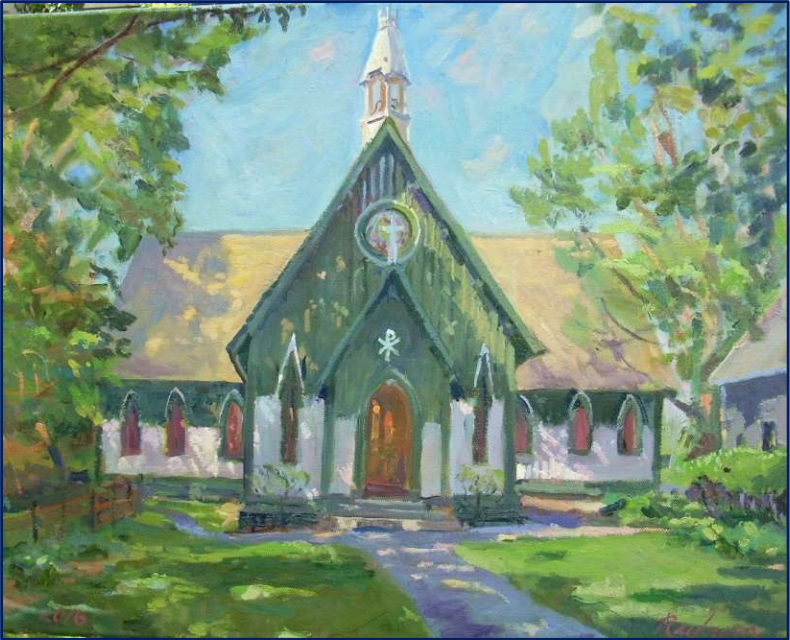


PEQUOT HOUSE & VILLAS, H.S. CROCKER, PROP'R.









THE MILITARY

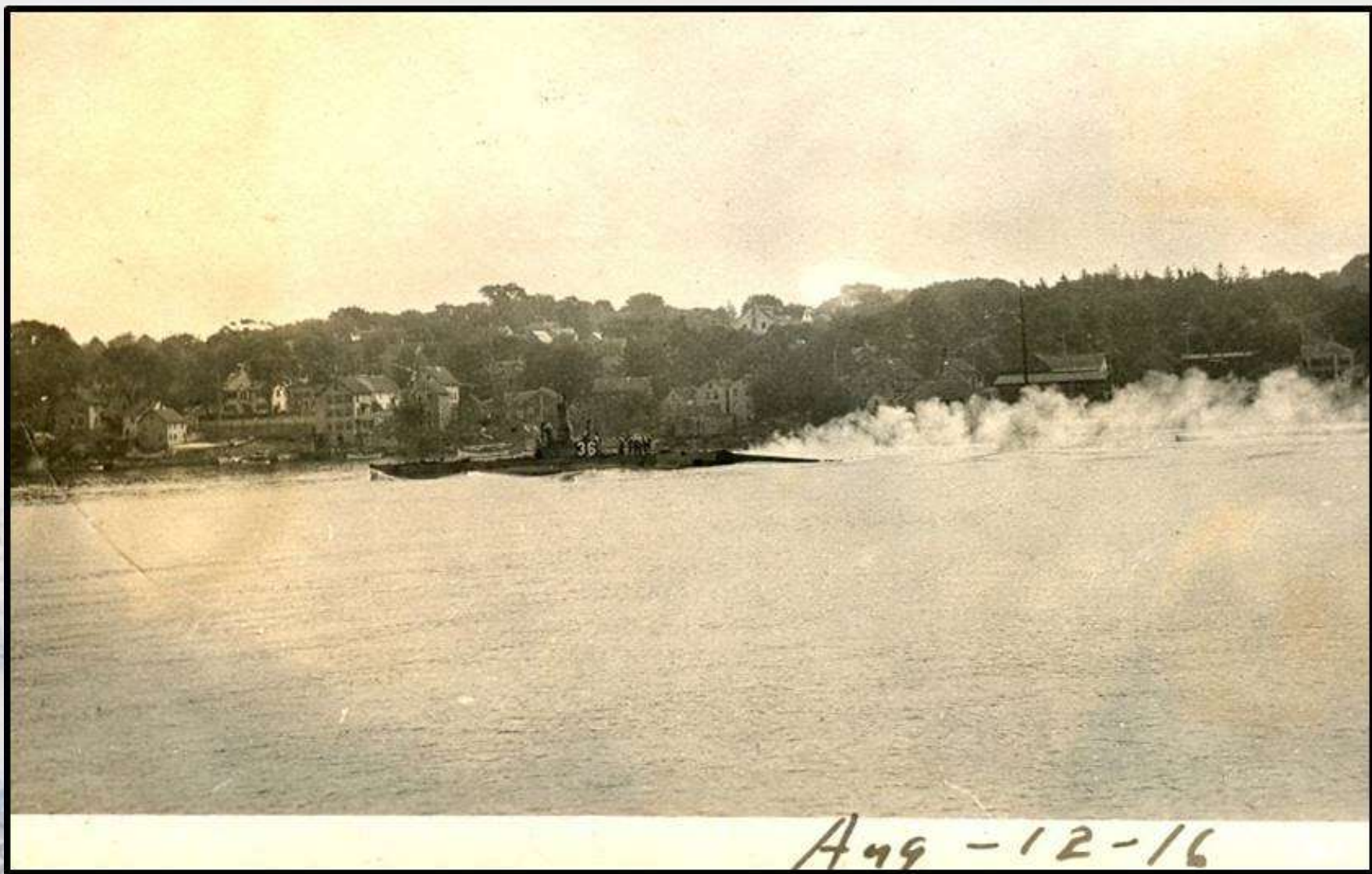
A historical illustration of a harbor scene. In the foreground, a coastal town with several buildings and a large open area is visible. A person stands on a path on the left. The middle ground is filled with numerous sailing ships of various sizes, some with multiple masts, on the water. The background shows a distant city or town on a hillside under a cloudy sky.

20th
CENTURY



May - 2 - 16





Aug - 12 - 16



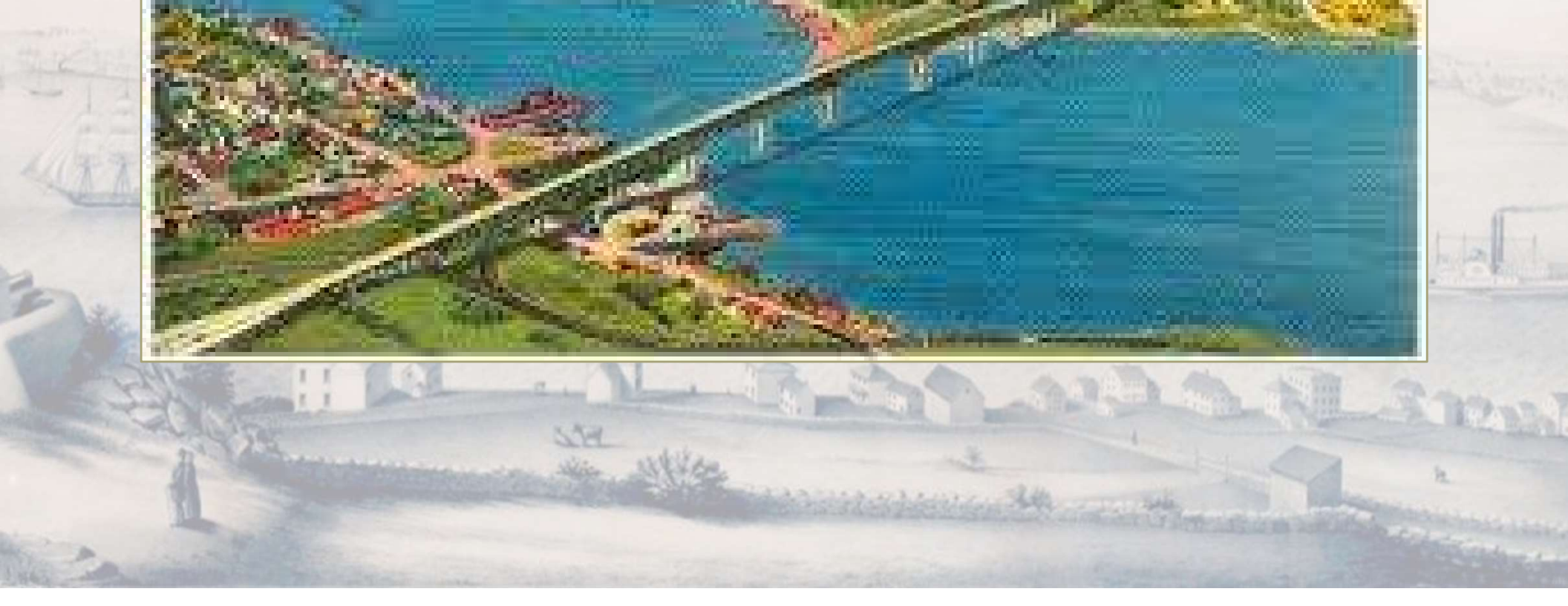
A historical illustration of a harbor, likely from the 19th century. The scene shows a large body of water filled with numerous sailing ships of various sizes, some with multiple masts and sails. In the foreground, a coastal town is visible, featuring several buildings, a prominent tower or lighthouse, and a large open area. A person is standing on a rocky outcrop in the lower-left corner, looking out over the harbor. The sky is filled with soft, white clouds. The overall style is that of a detailed engraving or a fine-line drawing.

WWII

COLD WAR



Air View of Gosport - New London Bridge on Thames River, New London, Conn.







SHIP'S POSITION

U. S. S. NAUTILUS

TO: COMMANDING OFFICER

TIME (of day) 1915U DATE 3 August 1958

LATITUDE 90° 00.0' N LONGITUDE Indefinite

BY (Indicate by check in box)

NGA MK19 RADAR OTHER

TWT — DRIFT — DISTANCE MADE GOOD SINCE FIXES (SHIP'S) Honolulu 4844

DISTANCE TO North Pole MILES Zero FIX —

TRUE MAG. ERROR VARIATION

180 MK19 3 E MK23 0° 170 E

MAGNETIC COMPASS READING (CENTER MARK)

STD STEER-ING REMOTE OTHER M 244 G 359

DEVIATION SIDETABLE DEVIATION DR. (Indicate by check in box)

126 E 3° W DR DR

REMARKS

NGA DR NGA
 $\sigma = 0$ $r_1 = 0$
 $\mu = 0$ $r_2 = 0$
 $r_3 = 1'$

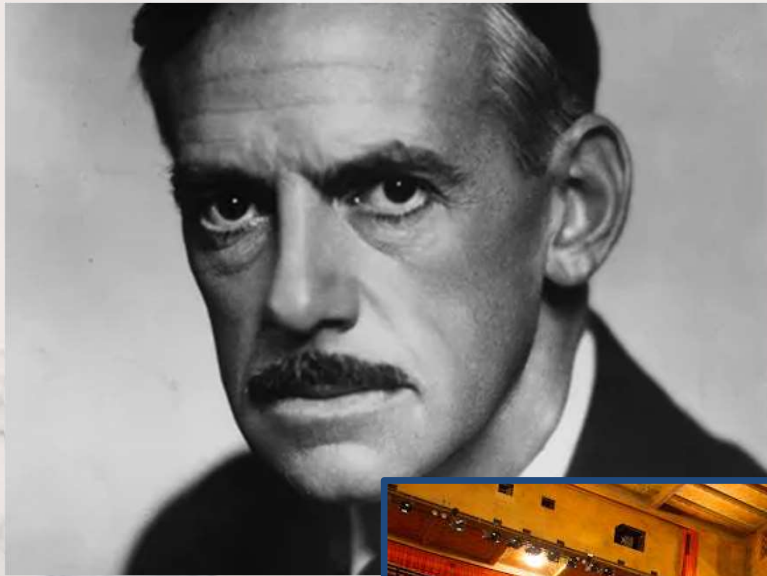
RESPECTFULLY SUBMITTED (PRINT NAME)

LT Shepherd M. Gember, USN

OR



Culture(s) on the Thames



HISTORY IS NOW

